

ENGINE SECTION 1

This service manual has been prepared to provide SUBARU service personnel with the necessary information and data for the correct maintenance and repair of SUBARU vehicles.

This manual includes the procedures for maintenance, disassembling, reassembling, inspection and adjustment of components and diagnostics for guidance of experienced mechanics.

Please peruse and utilize this manual fully to ensure complete repair work for satisfying our customers by keeping their vehicle in optimum condition. When replacement of parts during repair work is needed, be sure to use SUBARU genuine parts.

All information, illustration and specifications contained in this manual are based on the latest product information available at the time of publication approval.

FUEL INJECTION (FUEL SYSTEMS)	FU(H4SO 2.0)
EMISSION CONTROL (AUX. EMISSION CONTROL DEVICES)	EC(H4SO 2.0)
INTAKE (INDUCTION)	IN(H4SO 2.0)
MECHANICAL	ME(H4SO 2.0)
EXHAUST	EX(H4SO 2.0)
COOLING	CO(H4SO 2.0)
LUBRICATION	LU(H4SO 2.0)
SPEED CONTROL SYSTEMS	SP(H4SO 2.0)
IGNITION	IG(H4SO 2.0)
STARTING/CHARGING SYSTEMS	SC(H4SO 2.0)
ENGINE (DIAGNOSTICS)	EN(H4SO 2.0) (diag)
FUEL INJECTION (FUEL SYSTEMS)	FU(H4SO 2.5)
EMISSION CONTROL (AUX. EMISSION CONTROL DEVICES)	EC(H4SO 2.5)
INTAKE (INDUCTION)	IN(H4SO 2.5)
MECHANICAL	ME(H4SO 2.5)
EXHAUST	EX(H4SO 2.5)
COOLING	CO(H4SO 2.5)

ENGINE SECTION 1

LUBRICATION

LU(H4SO 2.5)

SPEED CONTROL SYSTEMS

SP(H4SO 2.5)

IGNITION

IG(H4SO 2.5)

STARTING/CHARGING SYSTEMS

SC(H4SO 2.5)

ENGINE (DIAGNOSTICS)

EN(H4SO 2.5)
(diag)

SPEED CONTROL SYSTEMS

SP(H4SO 2.0)

	Page
1. General Description	2
2. Accelerator Pedal.....	4

General Description

SPEED CONTROL SYSTEMS

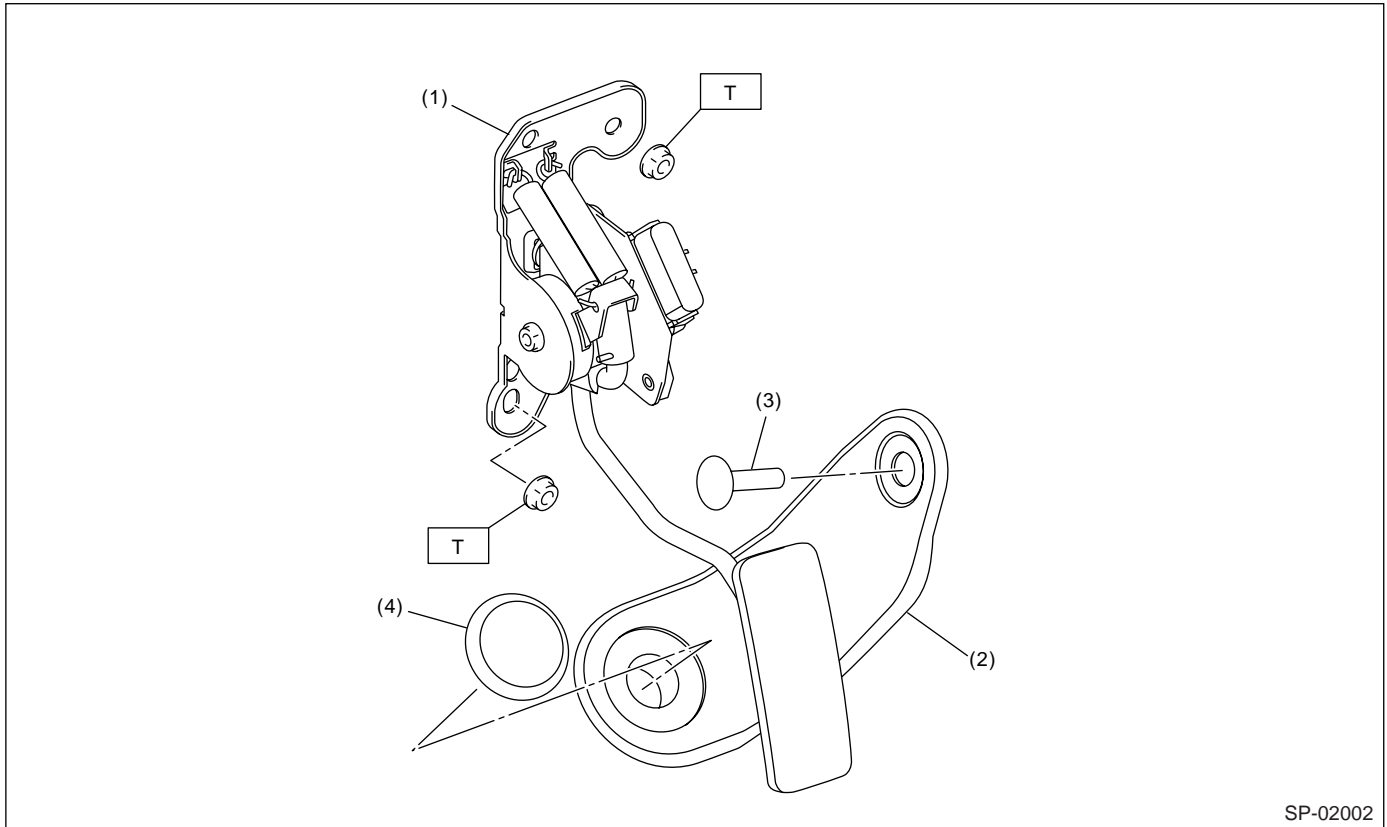
1. General Description

A: SPECIFICATION

Accelerator pedal	Stroke	At pedal pad	LHD model	50 — 63 mm (1.97 — 2.48 in)
			RHD model	53 — 65 mm (2.09 — 2.56 in)

B: COMPONENT

- LHD model

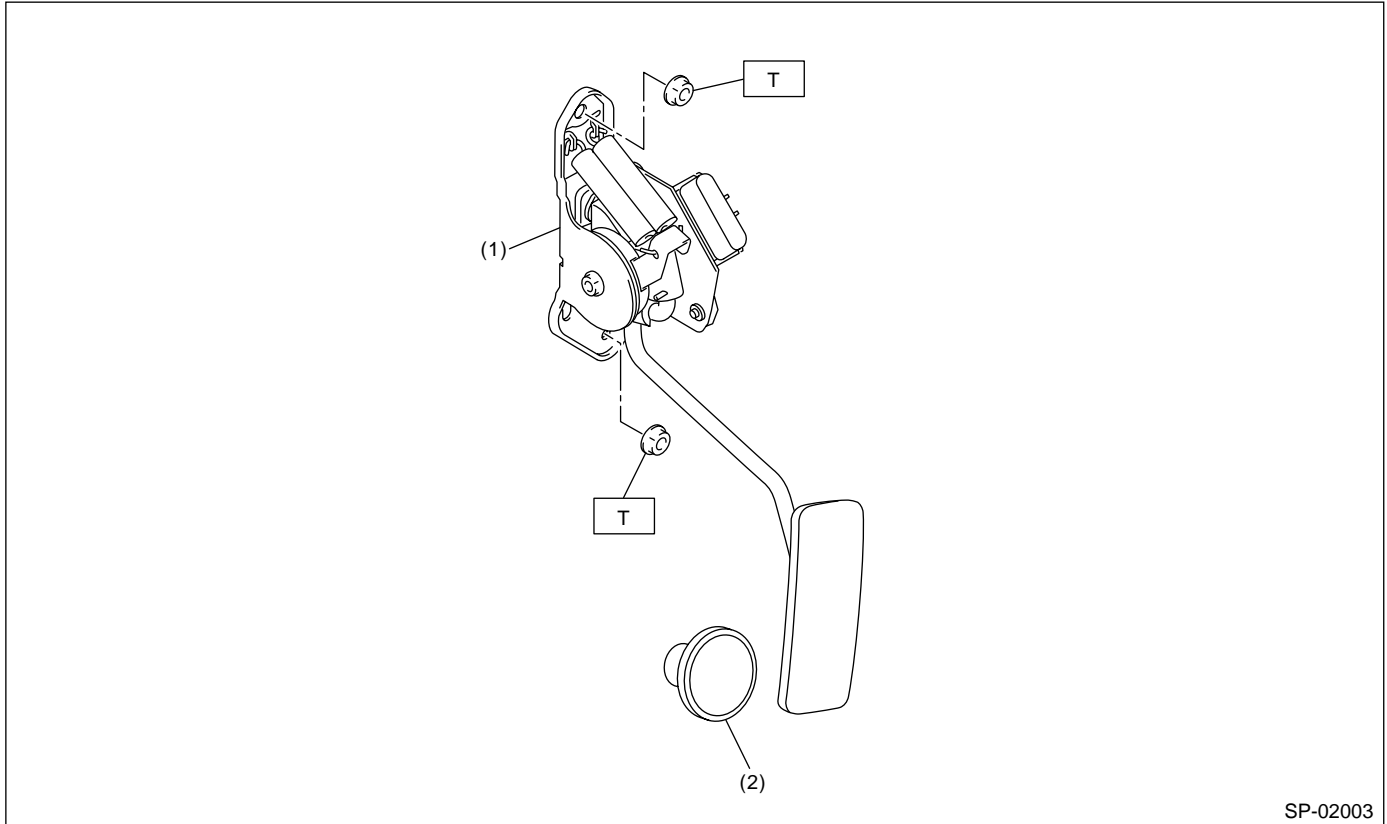


- (1) Accelerator pedal ASSY
- (2) Accelerator plate

- (3) Clip
- (4) Stopper

Tightening torque: N·m (kgf·m, ft·lb)
T: 18 (1.8, 13.0)

- RHD model



SP-02003

- (1) Accelerator pedal ASSY
- (2) Stopper

Tightening torque: N·m (kgf·m, ft·lb)
T: 18 (1.8, 13.0)

C: CAUTION

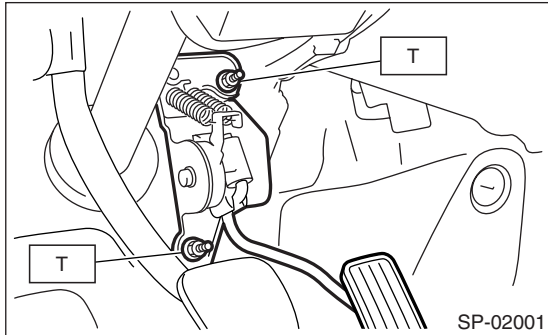
- Wear work clothing, including a cap, protective goggles and protective shoes during operation.
- Remove contamination including dirt and corrosion before removal, installation or disassembly.
- Keep the disassembled parts in order and protect them from dust and dirt.
- Before removal, installation or disassembly, be sure to clarify the failure. Avoid unnecessary removal, installation, disassembly and replacement.
- Be careful not to burn yourself, because each part on the vehicle is hot after running.
- Be sure to tighten fasteners including bolts and nuts to the specified torque.
- Place shop jacks or rigid racks at the specified points.
- Before disconnecting electrical connectors of sensors or units, be sure to disconnect the ground cable from battery.

2. Accelerator Pedal

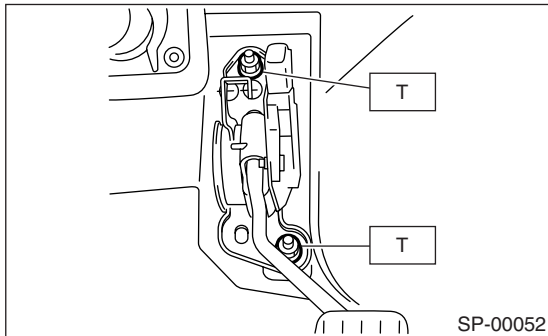
A: REMOVAL

- 1) Disconnect the ground cable from battery.
- 2) Disconnect the connector.
- 3) Remove the nut securing accelerator pedal assembly.

- LHD model



- RHD model



B: INSTALLATION

Install in the reverse order of removal.

Tightening torque:

18 N·m (1.8 kgf·m, 13.0 ft·lb)

C: DISASSEMBLY

NOTE:

Accelerator pedal cannot be disassembled.